



BROCHURE

# AVEVA™ Engineering

Manage evolving multi-discipline data for tagged engineering items such as lines and equipment

AVEVA Engineering enables multi-disciplinary teams of engineers to work effectively together to develop and maintain the detailed definition of all the key engineering items involved in plant or marine projects.

As projects progress, engineers build a database of its engineering objects, such as lines, equipment and valves, and all their key attributes. This object data is stored and managed in the project information model as part of the Digital Asset, enabling its integration with schematic and 3D design data and supporting global project collaboration where required.

AVEVA Engineering is highly versatile and configurable. It is typically used as an authoring tool for the process and mechanical disciplines, but is equally well suited for pipe stress, safety or other specialist disciplines. It enables each discipline to retain full control of their own data while being able to access and reference data from other disciplines. When used as part of an integrated AVEVA software deployment the complete Digital Asset is exposed to the full range of AVEVA's design, engineering, collaboration and lifecycle management technologies.

Built-in tools enable project or engineering managers to monitor design progress and the completeness and consistency of data. This monitoring covers a wide range of disciplines and their engineering, schematic and 3D data, thereby providing a coherent and comprehensive view of project status. The application can generate not only key project documents (such as process and mechanical datasheets, tag registers, line lists, equipment lists or valve lists), but also any kind of ad hoc or departmental report.

# Overview

Engineering data can be created, viewed or modified using both spreadsheet list-style and datasheet-style user interfaces, according to need or preference.

Users can also browse and navigate the complete project data including engineering, 3D, schematics and catalogue data using a configurable Project Explorer.

The database is under continuous access control, defining what information a user may create, view or change. All changes to the data are automatically stored in the database, creating a permanent audit trail. Users can follow up on changes using change highlighting and history functions. The user interface can also be configured to show only a relevant set of data for the role of the user and stage of the project, thereby reducing navigation and making data entry more efficient.

Built-in status control tools enable the status of every individual object to be fully controlled, and enable users to view change information on demand as they work enabling the implementation of various kinds of workflows and controlling the maturity of data over time.

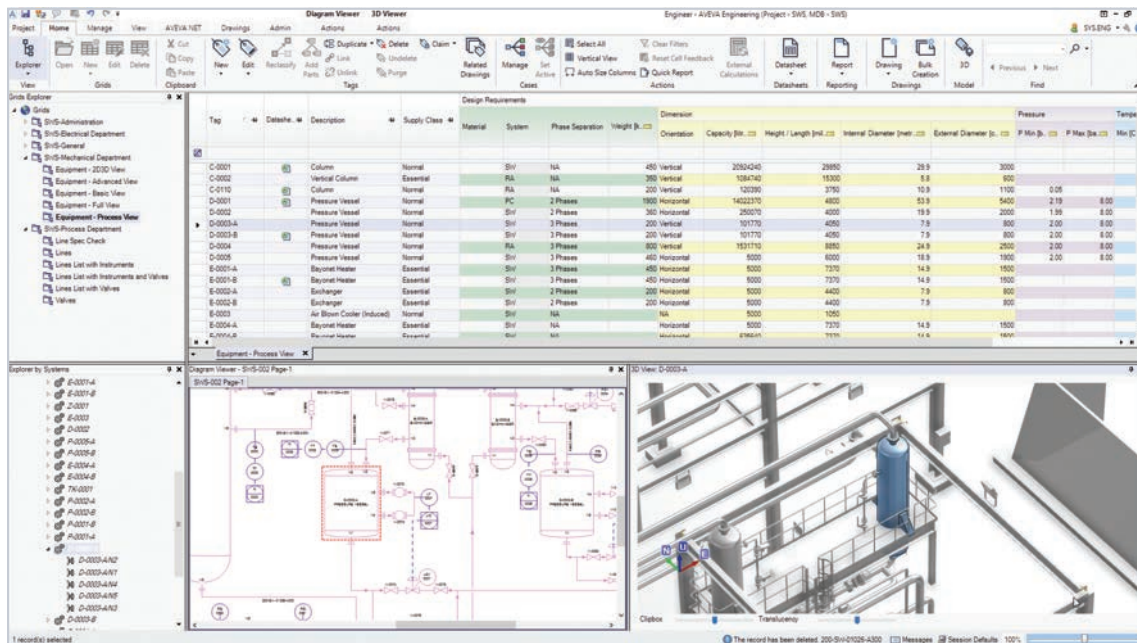
Configurable consistency checks can be applied across the database at any time to verify the quality of the data.

Project wide, formatted reports including charts and graphics can easily be created directly from the database.

As a member of the AVEVA Integrated Engineering and Design (IE&D) suite, AVEVA Engineering can directly access a wide range of design and engineering data across the 3D and schematics domains, enabling the creation of list deliverables without the need to copy any data between databases. A built-in Compare & Update capability is also available to synchronize against any other systems and data sources such as process simulators and calculation software.

The product is built on the proven AVEVA E3D technology, which enables distributed, multilocation working using AVEVA™ Connect.

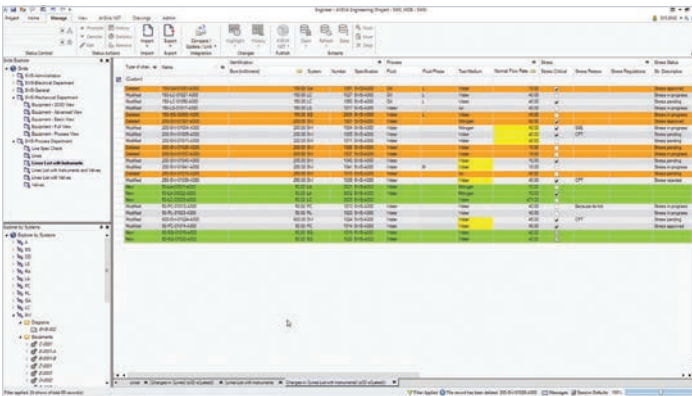
AVEVA Engineering can be readily configured to suit a wide range of project, customer or industry requirements. It includes a powerful programming language (PML) and .NET APIs, enabling the application of all kinds of customer or industry specific customisation and automations.



Due to the Integrated IE&D platform, users of AVEVA Engineering can access and reference a comprehensive set of data from other applications as they work. This enables P&IDs and the 3D model to be viewed for the currently focused engineering object.







Automatic change highlighting and history of changes (green = added records; red = deleted records; yellow = modified attributes).

applied to re-imported data also, enabling any changes to be accepted or rejected before updating the database.

### Controlled object revisioning

Efficient collaborative working is supported by object-level revision control across engineering disciplines. Engineering data created or updated by one discipline – process, mechanical, instrumentation or electrical – is issued to the rest of the project team at a controlled release level using subscription and notifications. Other engineering disciplines can confidently use this change-controlled data in their own workflows.

### Database-driven with proven, scalable, multi-user technology

AVEVA Engineering delivers the concurrent, multidiscipline, multi-user working environment required by project engineering teams on today's demanding plant and marine projects. Engineering, 3D design and schematics data are all managed in a common project environment, enabling users to easily view and reference data from other disciplines. Users of AVEVA's schematics and 3D products can reference and include AVEVA Engineering data in their deliverables.

### Tag management

New tag names can be created and communicated across disciplines according to the class definition and naming rules. Due to the hierarchical data model featuring multiple inheritance and integrated naming rules, the tag naming definitions can be managed in the most efficient way, and any changes to naming conventions can be easily implemented. Several parallel

Line List Summary		Run Date: Monday, January 18, 2021		AVEVA						
Project: ABC		Unit Name:		Date Rev:						
Class:		Unit Name:		Date Rev:						
Line	Item	Class	From	To	From	To	Status	Comments		
*	ALLC418B010	LCA	---	ALLC418B010	POW-008	12	87	WorkComplete	Under review by Mechanical Engineer	
*	ALLC418B020	LCA	---	---	---	39	248	WorkComplete	Need Information From Third Party	
*	ALLC418B030	LBO	---	---	POW-001	40	820	WorkComplete	Under review by Mechanical Engineer	
*	ALLC418B040	LCA	---	---	POW-001	2	80	WorkComplete	Under review by Mechanical Engineer	
*	ALLB208B020	LBO	ALLB208B020	---	POW-001	---	---	WorkComplete	Under review by Mechanical Engineer	
*	APNA108B010	MAN	---	---	POW-008	0	41	118	WorkComplete	Need Information From Third Party
*	APPS418B010	PSB	---	APPS418B010	POW-002	0	80	WorkComplete	Under review by Mechanical Engineer	
*	APPS418B020	PSB	APPS418B020	---	POW-002	0	80	WorkComplete	Under review by Mechanical Engineer	
*	APPS418B030	PSA	APPS418B030	APPS418B030	POW-001	0	80	WorkComplete	Under review by Mechanical Engineer	
*	ALLC108B010	LEC	ALLC108B010	---	POW-008	4	121	WorkComplete	Under review by Mechanical Engineer	
*	APPL418B010	PML	---	---	POW-002	0	80	WorkComplete	Work In Progress	
*	ALLC418B080	LCA	ALLC418B080	ALLC418B080	---	17	80	WorkComplete	Work In Progress	
*	ALLC418B090	LCA	---	---	---	39	248	WorkComplete	Need Information From Third Party	
*	ALLC418B100	LEC	ALLC418B100	---	POW-008	0	117	WorkComplete	Work In Progress	
*	APFA108B010	PAI	APFA108B010	APFA108B010	POW-001	0	30	WorkComplete	Work In Progress	
*	ALLB108B010	LBO	---	---	---	40	400	WorkComplete	Need Information From Third Party	
*	APNA108B010	MAN	---	---	POW-008	10	400	WorkComplete	Need Information From Third Party	
*	APPS418B010	PSB	---	APPS418B010	POW-002	0	80	WorkComplete	Work In Progress	
*	ALLC418B050	LCA	ALLC418B050	ALLC418B050	POW-008	17	80	WorkComplete	Work In Progress	
*	APPS418B010	PSA	---	---	POW-001	0	80	WorkComplete	Work In Progress	

Example report showing completeness of attributes in a line list.

naming schemes can be supported, for example where separate internal and client names are required, or when different industry naming conventions like KKS are dictated. Any tag name changes needed due to re-classification etc can be carried out and the consequences across disciplines fully managed.

### Built-in engineering capabilities

The product is designed specifically for managing engineering data, including such concepts as object classification, process cases, duplicate objects (ie. Clones), Units of Measure, maturity, and more.

### Configurable project explorer

Customer-defined Project Breakdown Structures can be defined to suit project and company standards. The Project Explorer mechanism offers a very flexible way to navigate and access the project data, according to each user's role. Because AVEVA Engineering stores data in the same project environment as the 3D and schematic data, a Project Explorer can be defined that includes objects from all domains.

### Compare and update

Compare and update utilities enable AVEVA Engineering data to be compared against data created in other AVEVA products and/or external systems, and updates to be selectively applied as required. This makes the alignment with a new revision of data from another engineering department easier, faster and more accurate.



### Automatic change recording and highlighting

Changes can be efficiently implemented using bulk update and search-and-replace features. They are automatically tracked in the database. Change information can be selectively viewed by users as they work and additions, deletions and modifications can be highlighted within any dataset that a user is working with.

### Built-in status control

Engineers have better visibility of the maturity of information, and project stage gates can be reflected into the source of data.

### Data consistency checks

A wide range of inconsistencies can be detected in the engineering data itself, and across the engineering, 3D, schematic, instrumentation and electrical datasets.

### Automatic reports direct from the database

High-quality, formatted project reports can be produced directly from the database, optionally including charts and graphics.

### Built-in viewers for P&IDs and the 3D model

Viewers for P&ID and for 3D are built in, and enable users of AVEVA Engineering to view and reference schematic and 3D data while the engineering data is being manipulated.

### In-context access to the full digital asset

The Design-in-Context capability enables faster, better and more informed decision making. It creates a direct connection to the centralised Digital Asset repository. When an object is selected in the AVEVA Engineering environment, the Context panel dynamically updates available content relevant to the selection – such as datasheets, vendor documentation, purchase orders, planning charts and calculation sheets – which can then be opened in context to the original object, to help ensure decisions are made based on all available information.

### Multi-location global working

AVEVA Engineering is compatible with AVEVA Global, enabling it to be used across even the most complex multi-location, collaborative engineering projects.

### Highly configurable

All aspects of the product, including the data model, engineering discipline boundaries and access rights, are highly configurable. A powerful, built-in programming language (PML) and .NET APIs enable all kinds of customer/industry customisations and automations to be applied.

For more information, visit:  
[aveva.com/en/products/aveva-engineering](https://aveva.com/en/products/aveva-engineering)